



The charm of tactile natural fabrics meets the performance benefits of porcelain tile with Jute™. As a material, jute is versatile and sustainable – and now that look translates to tile, which shares those same attributes, along with durability for both floors and walls. Cool colors create warm environs for any style at home.

**JUTE™**  
*Glazed Porcelain*





FLOOR / WALL

RESIDENTIAL

COMMERCIAL

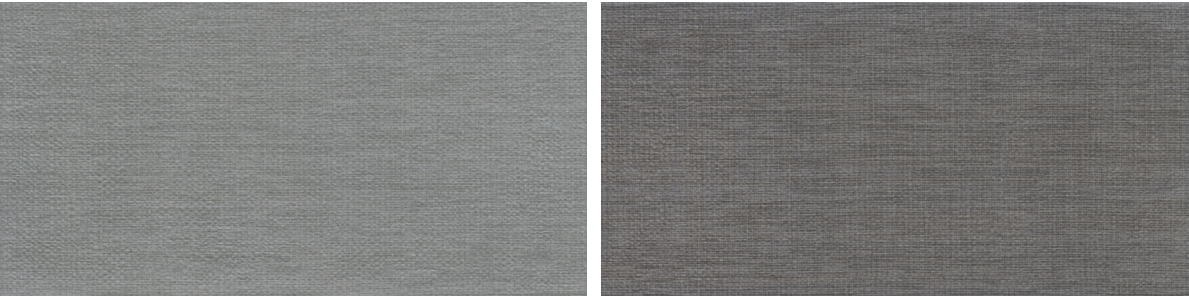
INDOOR

OUTDOOR



Linen

Ivory



Gray

Charcoal

|                            |  |                           |                             |                          |                    |                          |                           |
|----------------------------|--|---------------------------|-----------------------------|--------------------------|--------------------|--------------------------|---------------------------|
| SIZES                      |  |                           |                             |                          |                    |                          |                           |
|                            | <div><div></div><div>12"x24"<br/>23.62"x11.81"</div></div> <div><div></div><div>12"x12" Mesh</div></div> <div><div></div><div>3"x12"<br/>Floor SBN</div></div> |                           |                             |                          |                    |                          |                           |
|                            | <div>Thickness</div> <div>7.5mm8mm8mm</div>  |                           |                             |                          |                    |                          |                           |
|                            | <div>Faces</div> <div>1N/AN/A</div>  |                           |                             |                          |                    |                          |                           |
|                            | <div>Finish</div> <div>MatteMatteMatte</div>   |                           |                             |                          |                    |                          |                           |
|                            | <div>Edge</div> <div>PressedCutCut/Rounded</div>   |                           |                             |                          |                    |                          |                           |
| Grout Joint Recommendation | <div>3/16"3/16"3/16"</div>   |                           |                             |                          |                    |                          |                           |
| TESTING                    |  |                           |                             |                          |                    |                          |                           |
|                            | Abrasion Resistance<br>C1027   | Breaking Strength<br>C648 | Chemical Resistance<br>C650 | Water Absorption<br>C373 | DCOF ANSI<br>A1371 | Scratch Hardness<br>MOHS | Shade Variation<br>Rating |
| Results*                   | III  | >250 lbf                  | Resistant                   | <0.5%                    | >0.55              | 7                        | V1                        |

- Sustainability Attributes

• Red List Free

• Health Product Declaration (HPD) provided upon request

• Product Packaging is 100% recyclable
- VOC Free