

ARIZONA TILE

KONKRETE SERIES



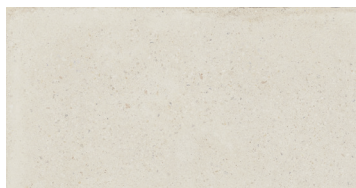
Konkrete Bianco



Konkrete Beige



2 x 2 Mosaic Mesh



Konkrete Bianco



2 x 2 Mosaic Mesh



Konkrete Cenere



2 x 2 Mosaic Mesh



Konkrete Grigio



2 x 2 Mosaic Mesh

When installing rectangular or square tiles 15 inches or longer with a staggered joint, it is recommended that the offset should not exceed 33%, unless otherwise specified by the manufacturer.



For packaging information, please contact your local Arizona Tile.

DCOF rating is a measurement of a tile's frictional resistance. It is the specifier's responsibility to ensure the chosen tile is appropriate for each interior and exterior application.

Please view actual material when making your selection, as the images on this page are only representative.

Revised 04/29/25

MADE IN ITALY

PRODUCT TYPE

Rectified Color Body Porcelain

†Glazed Porcelain

Digital Print Technology

STOCKED COLORS

Konkrete Beige

Konkrete Bianco

Konkrete Cenere

Konkrete Grigio

STOCKED SIZES

12 x 24

24 x 48

*24 x 48 R11 Anti-Slip Finish

†*24 x 48 x 2cm Paver R11 Anti-Slip Finish

2 x 2 Mosaic Mesh

STOCKED TRIMS

3 x 12 SBN

†Easy Edge 13 x 24 x 2cm Coping **Coming Soon**

*Specifically designed for outdoor, exposed areas as well as wet applications, including shower floors. To be certified as R11 Anti-Slip, a tile must pass internationally-recognized testing.

To learn more, visit www.arizonatile.com

DCOF rating is a measurement of a tile's frictional resistance. The above result is for the Standard Finish. The testing for R11 Anti-Slip Finish is static, which is different from the Dynamic Coefficient of Friction (DCOF) test which is a dynamic test. These two tests measure for different and separate results, therefore the DCOF test is not the appropriate test for the R11 Anti-Slip Finish. To be certified as R11 Anti-Slip Finish, a tile must pass internationally-recognized testing.

The Konkrete series is an Italian-made rectified color body porcelain that is available in two finishes, including the R11 Anti-Slip Finish. Created using digital print technology, its pattern mimics the look of aggregate concrete, enhancing its organic appearance. Given the beautiful selection of color options available in the series, Konkrete offers the modern appeal of concrete with the practical properties of porcelain tile. Please note, for pavers, a minimum grout spacing of 1/8" or 3mm is recommended.

Piece to piece variation in shade or color are inherent in all fired clay products; therefore, it is recommended to mix tiles from several boxes at a time during installation to achieve the best range of color. When mixing sizes within a series, shade, texture and calibration differences should be expected. This series is suitable for residential and commercial applications. Because this material is a porcelain product, minimal maintenance is required.

For proper bonding, LFT/LHT mortar for large format and heavy tiles should be used when installing tiles with a dimensional length greater than 15 inches, and rectangular shape and plank tile, per industry standards. Proper thinset coverage is also necessary, and in some cases, back buttering of tile may be required.

RECOMMENDED USES

Commercial

Residential

Interior Floor

*Exterior Floor

Interior Wall

Exterior Cladding

Fireplaces

Shower Walls

**Shower Floors

Steam Showers

Pool & Spa

*24 x 48 R11 Anti-Slip Finish Only

**2 x 2 Mosaic Mesh and 24 x 48 R11 Anti-Slip Finish Only

PAVER RECOMMENDED USES

†Commercial

†Residential

†Exterior Floor

SPECIAL ORDER

Special Order Sizes and Finishes Available: Please contact your Sales Representative for more details.

DYNAMIC C.O.F. WET: ≥0.42

P.E.I. RATING: 4

FROSTPROOF: Yes