



	Technical Specifications	Standard Requirements	Test Results
	Water Absorption UNI EN ISO 10545-03	<0.5%	<0.5%
	Breaking Strength UNI EN ISO 10545-04	Minimum: 1300 N	>1300 N
	Modulus of Rupture UNI EN ISO 10545-04	Minimum: 35 N/mm²	> 35 N/mm²
	Shock Resistance UNI EN ISO 10545-05	Suggested Minimum: E > 0.55	Resistant
	Resistance to Deep Abrasion UNI EN ISO 10545-06	Maximum: 175 mm³	< 175 mm³
	Thermal Linear Expansion UNI EN ISO 10545-08	Minimum for Floor Applications: Class 3	Complies with the standard
	Thermal Shock Resistance UNI EN ISO 10545-09	Resistant	Resistant
	Frost Resistance UNI EN ISO 10545-12	Resistant	Complies with the standard
	Chemical Resistance UNI EN ISO 10545-13	Domestic Chemical Products: UB/GB Acids and Alkalis: As Reported	MIN CLASS B
	Stain Resistance UNI EN ISO 10545-14	Minimum: Class 3	Class 3
PEI	PEI Rating (Scratch Resistance) ASTM C 1027	As Reported	IV
	Dynamic Coefficient of Friction (DCOF) ANSI A137.1	For Level Interior Spaces Expected to be Walked Upon When wet: ≥ 0.42	≥ 0.42
	Shade Variation	As Reported	V3
	Surface	As Reported	Natural
	Thickness	As Reported	20 mm
	Number of Screens	As Reported	24" x 24" - 30 24" x 48" - 15 36" x 36" - 16 48" x 48" - 08







The data refers to first choice material in the natural version.



PORCELAIN PAVERS

PARKER

RECTIFIED PORCELAIN PAVERS



OUTDOOR NATURAL FINISH 2CM (3/4") PAVERS

WHITE



48" x 48"



24" x 48"

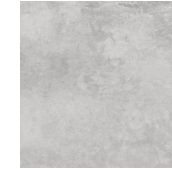


36" x 36"

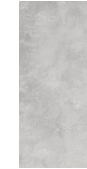


24" x 24"

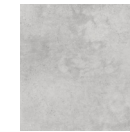
SILVER



48" x 48"



24" x 48"



36" x 36"



24" x 24"

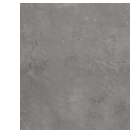
ANTHRACITE



48" x 48"



24" x 48"



36" x 36"



24" x 24"



PARKER

Parker is a concrete-look collection of 2CM pavers with an industrial edge and softness of an organic stone. With the look of freshly poured cement, Parker has a depth and dynamism of color that make it irresistible. It's unrefined look is ideal for urban settings that value an unfinished aesthetic. This depth of color paired with subtle visual cracks and stone aggregate throughout make this collection truly a splendor to look at. Each face is a new opportunity to add rich character to the outdoor spaces that Parker is installed on. Available in three colors: white, silver, and anthracite and four sizes: 48" x 48", 24" x 48", 36" x 36", and 24" x 24" Parker can provide a range of design solutions to create the ideal, city setting outdoor oasis.

